

Field Scout version II

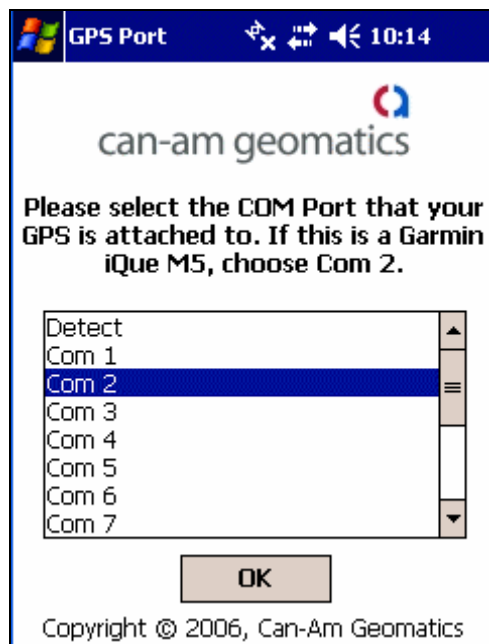
Install Instructions

Please read these install instructions carefully before installing the program for the first time.

Field Scout version II is shipped, self contained, on an SD memory card. To install the program simply insert the card in the SD slot on your Pocket PC. The install program will execute and will configure your device to run the Field Scout version II program. It installs needed files to your device. These include a symbol font, a program shortcut icon, two data files and the Microsoft Compact Framework version 2.

It is ideal to have 18 MB or more of **available** memory/storage on the device. The install program checks device contents and will give you a warning if available memory is below a certain threshold. It will also abort the installation if memory is very low. ***If the install aborts you must adjust the contents of your Pocket PC, to free up memory.*** If you receive a low memory warning, please see the *Program Requirements* section of the Field Scout II User Guide for detailed memory specifications and adjust as necessary.

The first time the card is inserted, you will be prompted to select a communications port for your GPS. If you know the port that your GPS uses, select that port from the list and press **OK**. This setting will be saved in the FieldScoutII folder on the SD Card. If you do not know the port, select “**Detect**” from the drop down list and then press **OK**. With this setting, the first time you use the GPS functions, Field Scout will attempt to automatically detect the GPS and then save the detected settings in the FieldScoutII folder on the SD Card.



If you are using a Garmin IQue M5, automatic device detection does not operate smoothly. We strongly recommend setting the port on first installation. On older IQue M5's this port is Com 2. On newer versions (ROM revision 2.60 or later), this port is Com 4. See the Garmin manual for details on which port your device uses. If you set the port and it does not appear to work, you can alter port settings in the *Options* dialog within Field Scout. Please see the User Manual for instructions on changing the port from within the program.

Each time the card is inserted or removed, the install program will run. This takes a few seconds. After the initial install, each subsequent card insertion executes the install program and checks to ensure all necessary files still exist on the device. When the card is removed, the install program also runs, removing the program icon from the device. The icon is removed because when the card is not in the device the program is not available.

As Field Scout is designed to run from the SD Card, you should not remove the card while the program is running. If you do remove the card while Field Scout is running, **do not attempt to add any well records until you have reinserted the memory card.**

The following three folders, on the SD Card, are necessary for Field Scout to run. We recommend running the program from the card provided by Can-Am Geomatics.

- 2577
- CanamData
- FieldScoutII

If you need to run the program from your own memory card, you must copy these three folders to the card you plan to use. All three folders must be together in the root directory of the SD Card just as they are on the shipping version. You may copy these files to any memory card that is supported on your Pocket PC.

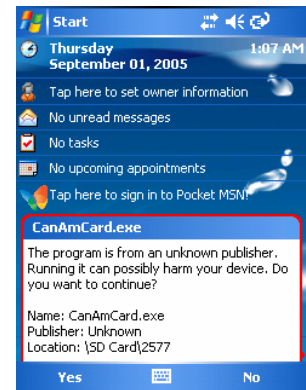
If your own memory card already contains a folder called 2577, it is VERY IMPORTANT that you DO NOT replace the contents of this folder with the contents from the Field Scout memory card. Doing so may cause other applications on your machine to misbehave.

Please read the User Guide, for full operating instructions. It is available as a PDF file, called *FieldScoutIIUser.pdf*, on the Storage Card and the CD.

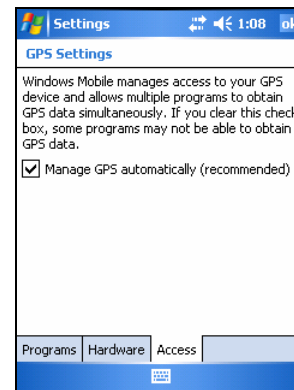
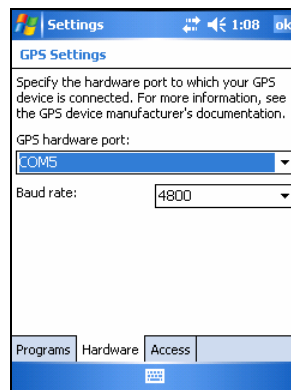
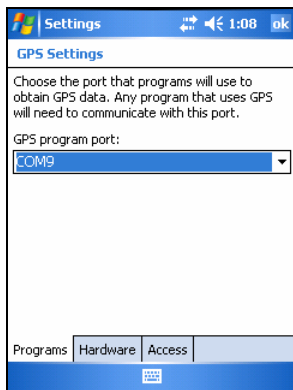
Additional Install Instructions for Mobile 5 Users

Windows Mobile 5 is the latest Pocket PC operating system from Microsoft. It offers additional features and benefits but also requires some additional installation steps.

(Windows Mobile 5 has the ability to check for digitally signed programs. This feature is configured by the manufacturer of your device. You may receive security prompts, as shown on the dialog to the right, when you install and first run Field Scout. You may safely answer yes to all these prompts for the Field Scout Install and Program files. You only need to answer yes the first time you run the programs. The device will remember your answer for each additional time)



Windows Mobile 5 has built in support for GPS management. To access these dialogs, Tap the **Start Menu**, tap **Settings**, tap the **System** tab and then tap the **GPS** icon. Configure the GPS port using the following dialogs prior to installing Field Scout II.



- The first dialog allows you to choose a Virtual Port that all programs will use to share GPS information. Set this to an unused serial port on your device. (On the ASUS 636N, we use Com9). This is the port that Field Scout will use to receive its data.
- The second dialog is the hardware port of your GPS device. You will need to consult your user manual to obtain this information. (On the ASUS 636N this port is Com5 and the Baud Rate is 4800).
- On the third dialog, select the check box that allows Windows to manage the GPS.

Please use the steps listed on the next page, in addition to the information listed above, as a guide to Mobile 5 installations.

1. Insert the Memory Card that contains the Field Scout program.
2. When prompted to install the .Net Compact Framework, tap **OK**.
3. When prompted to choose an install location, select **Device** and tap **Install**.
4. When the .NET Compact Framework install is complete, tap **OK** to restart the device.
Leave the SD card in the device until after the restart is complete.
5. When Windows Mobile 5 has restarted, remove the Memory Card and wait a few seconds. A program, that is part of the install, will automatically run. Tap **OK** for any messages displayed by this program when it runs.
6. Reinsert the Memory Card
7. When prompted choose the GPS Serial Port. This should be the port selected on the **Programs** dialog tab as shown above. (On the ASUS 636N this would be **Com 9**)
8. The program is now ready to run. Go to the **Start Menu**, tap **Programs** and tap the **FieldScoutII** program icon.

**Answer YES to any security check for the install programs and the Field Scout II program.*

Can-am Geomatics
900, 340 12th Ave SW
Calgary, Alberta T2R 1L5
403-269-8887
fieldscout@canam.com