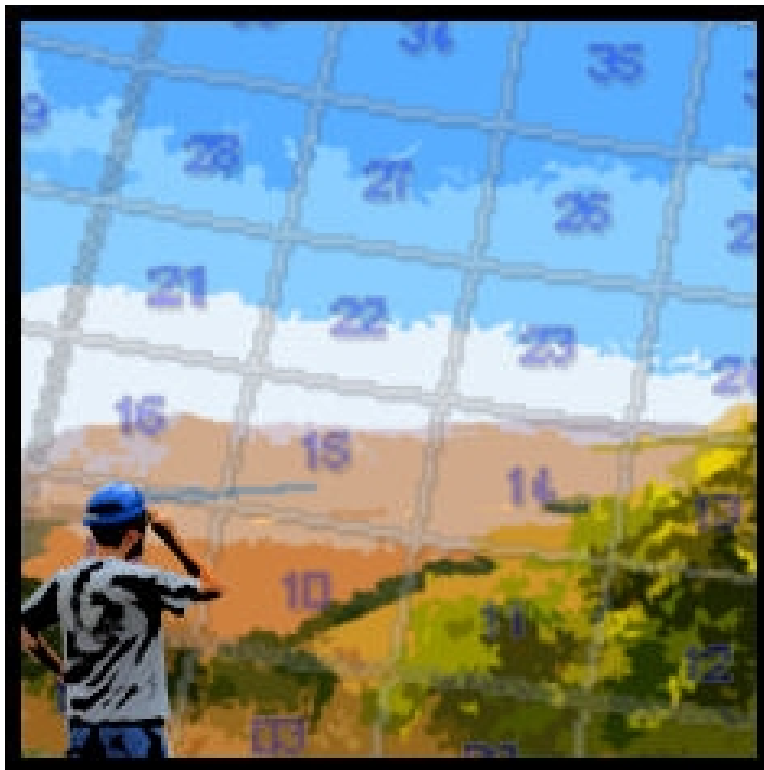


**Accurate.
Convenient.
Efficient.**



**... you'll never lose
your way with
Field Scout™**

Field Scout™



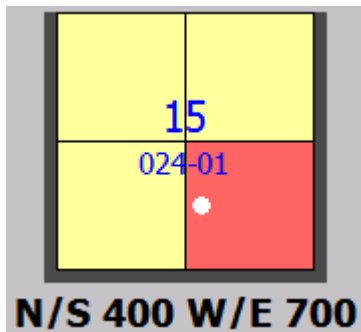
For more information and to purchase this application, please contact: fieldscout@canam.com

* This application will work on Pocket PC devices with the following operating systems:

- ü Windows Mobile 2003
- ü Windows Mobile 5.0

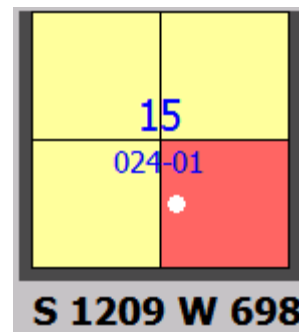
Can-Am **Field Scout™** version II turns your Pocket PC and GPS into a powerful "In the Field" system for navigating and locating wells, point locations or other features. Data is stored in database tables and can be entered and edited by user input or by GPS input. These are displayed in textual form as well as on the map display.

Using the Alberta Township System and the Saskatchewan Township System data files, **Field Scout II** simultaneously calculates and displays, in NAD-83:



Precise legal location including accurate offset distances from:

- Section boundaries (Local Coordinates)
- North East corner (Local Coordinates)
- Lat/Long (Geographic)
- Northing and Easting (UTM)



Ø **Pinpoint your location accurately.** Using the GPS, **Field Scout II** will report your location in all the formats listed above.

- Ø **Set a destination point.** Add locations to your data set using any of the three coordinate input methods listed above. Set a well (data point) or a section corner to be your destination.
- Ø **Navigate quickly and easily.** Using the GPS, receive voice prompts and visual feedback indicating distance and azimuth from your current location to the selected destination.
- Ø **Record your movements into tracks.** **Field Scout II** will record tracks to a database that can then be followed back, retracing your steps.
- Ø **Create Redlines to capture ad-hoc information.** Using a sketch tool you can draw and annotate on the map.
- Ø **Visually reference your information on a map.** Use **Field Scout II** mapping tools to enhance input and display of your information and to provide additional navigation and locating functionality.

The following information can be displayed on the map:



- Wells (data points) entered into the program.
- Your current location and destination.
- The active track.
- Your redline information.
- The Alberta and Saskatchewan Township system grids based on the latest government data sets.
- Alberta and Saskatchewan background base map showing Roads, Railways, Contours, Hydrography, Urban Centers and Populated Places, Indian Reservations and Métis Settlements, Airports and Airfields and Parks.

- Ø **Other map data sets.** A user may incorporate Air Photos, Raster Digital Elevation Models and other user specified data sets. *Incorporating these datasets may require assistance from Can-Am Geomatics.*
- Ø **Export and print maps.** Your current map view can be exported to a geo-referenced bitmap that is ideal for printing or for incorporating in Pocket PC or Desktop mapping applications.
- Ø **Share your data.** Datasets can be exported in a variety of formats. These datasets can be shared between different users of **Field Scout II**. In addition this information can be imported and displayed in other Pocket PC or Desktop applications.